



LYNN UNIVERSITY CONSERVATORY OF MUSIC

2006  
2007 SEASON

The Lynn University Conservatory of Music attracts some of the world's most talented young musicians. Here, these student-artists, who hail from more than a dozen countries, pursue their degrees in instrumental performance, preparing to join the world's leading symphony orchestras and most prestigious graduate music programs.

To build upon our excellence, we need your help. You may support the Conservatory of Music by contributing to scholarships, the development of new programs or other student needs. You may assist the conservatory the following ways:

**THE ANNUAL FUND**

A gift to the Annual Fund can be designated for scholarships, various studios, special concerts or to the General Conservatory Fund.

**ESTATE GIFT**

An estate gift will provide for the conservatory in perpetuity. Your estate gift may be made as a gift of appreciated stock, real estate or cash.

**FRIENDS OF THE CONSERVATORY**

As a member of the Friends of the Conservatory, you will be involved in an organization that seeks to address the needs of the students and the conservatory as a whole. This organization has just completed its first year and now includes more than 100 members providing major scholarship assistance to the students.

**VOLUNTEERING**

Become a volunteer. Contact the Ticket Office Manager at 561-237-9000 for more information.

Your contribution to the conservatory is tax-deductible. For additional information, you may call the development office at 561-237-7766, or visit the university's Web site at [www.lynn.edu](http://www.lynn.edu).

*Piano Master Class with John Perry*

Monday, Oct. 16 at 10:00 a.m.  
Amarnick-Goldstein Concert Hall

*Featuring students of Roberta Rust*

*Sponsored by Esther and Arnold Kossoff*

Sonata Op. 81a .....Ludwig van Beethoven  
Andante espressivo  
Vivacissimamente

*Oliver Salonga (senior)*

From Faschingschwank aus Wien .....Robert Schumann  
Romanze  
Intermezzo

*Amanda Albert (senior)*

English Suite No. 5 in e minor.....J. Sebastian Bach  
Prelude

*Krume Andreevski (1<sup>st</sup> yr. MM)*

Rhapsody on a Theme of Paganini, Op. 43...S. Rachmaninoff  
Variations No. 11-18

*Karl van Richards (1<sup>st</sup> yr. PPC)*  
*Dr. Yang Shen (orchestra)*



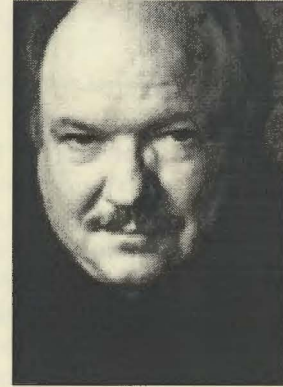
LYNN UNIVERSITY CONSERVATORY OF MUSIC  
3601 North Military Trail, Boca Raton, FL 33431

**Ticket Office:** 561-237-9000  
**E-mail:** [tickets@lynn.edu](mailto:tickets@lynn.edu)

**Fax:** 561-237-9002  
**[www.lynn.edu/music](http://www.lynn.edu/music)**

## John Perry

Professor, keyboard studies, earned his bachelor's and master's degrees at the Eastman School of Music and was a student of Cecile Genhart. During those summers, he worked with the eminent Frank Mannheimer. Recipient of a Fulbright Scholarship, he continued studies in Europe for four years where he worked with Wladyslaw Kedra, Polish concert artist and professor at the Akademie für Musik in Vienna, and Carlo Zecchi, renowned conductor, pianist, and head of the piano department at the Santa Cecilia Academy of Music in Rome.



Mr. Perry has won numerous awards including the highest prizes in both the Busoni and Viotti international piano competitions in Italy and special honors at the Marguerite Long International Competition in Paris. Since then he has performed extensively throughout Europe and North America to great critical acclaim. Also a respected chamber musician, Mr. Perry has collaborated with some of the finest instrumentalists in the world. He also enjoys an international reputation as a teacher, presenting master classes throughout the world. His students have been prize winners in most major competitions and include two first-prize winners in the Rubinstein, four first-prize winners in the Music Teacher's National Association national competition, and first-prize winners in the Naumburg National Chopin competition, Beethoven Foundation competition, the Federated Music Clubs, and the YKA, AMSC, and YMF competitions, and finalists in the Chopin International in Warsaw, the Van Cliburn, the Queen Elisabeth, Busoni, Viotti and the Three Rivers competitions.

In addition to his position as professor of music at the USC Thornton School, Mr. Perry is also visiting artist teacher at the Royal Conservatory of Music in Toronto, a member of the faculty of the Colburn School for the Performing Arts in Los Angeles, the Idyllwild School of the Arts in Idyllwild, California, and frequent guest faculty at the Banff Center in Alberta, Canada. During the summer he is an artist-teacher at the Aspen Music Festival and School, the Sarasota Music Festival, the Holland Music Sessions, as well as visiting faculty at other national and international music festivals. His recordings are available on the Telefunken, Musical Heritage Society, CBC, ACA and Fox labels.