



LYNN UNIVERSITY

CONSERVATORY OF MUSIC

2008-2009



Musician with Cello—Vencent Ko

When talent meets inspiration, the results are extraordinary.

Tuesday, January 13, 2008

Master of Music

Helena Piccazio, violin

Tuesday, January 13, 2008

5:30 p.m. Amarnick-Goldstein Concert Hall

Lynn University Conservatory of Music

Boca Raton, FL

44 Violin Duets, Volume 1 Sz. 98, BB 104

Burlesque

New Year's Song no. 1

Dance of the Fly

Hungarian March

Bela Bartok

(1881-1945)

Carol Cole, violin

Sonata no. 10 in G major op. 96

I - Allegro moderato

II - Adagio espressivo

III - Scherzo: Allegro

IV - Poco allegretto

L. van Beethoven

(1770-1827)

Zhou Jiang, piano

Intermission

Anthemes 1

Pierre Boulez

(1925-)

Double Concerto for Oboe and Violin in C minor BWV 1060

I - Allegro

II - Adagio

III - Allegro

J. S. Bach

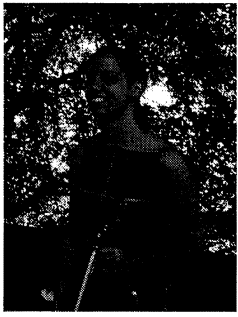
(1685-1750)

Veroslav Taskov, oboe

Kaitlin Richardson, violin; Marco Real, violin

Lydia Luce, viola; Jonah Kim, cello

Jeff Adkins, double bass



The Brazilian Helena Piccazio began to play violin in 1991. She had joined many orchestras since then as the São Paulo Youth Philharmonic Orchestra (toured in Arizona in 1995), Repertoire Experimental Orchestra (played in Maazel/Villar International Conducting Competition), University of São Paulo Symphonic Orchestra, Jeunesses Musicales World Orchestra (toured in China 2005, Europe 2005/06 and 2006/07).

Helena has also participated in important music festivals such as Campos do Jordão Internacional Music Festival in Brazil, Xenia Ensemble Chamber Music Course in Italy and the Lucerne Festival Academy 2007 and 2008 in Switzerland, one of the most important contemporary music festivals nowadays, under artistic direction of Pierre Boulez.

Graduated at FAAM – Alcantara Machado Arts College in Brazil, in the violin studio of professor Laercio Diniz, Helena was also pupil of Renata Jaffe, Claudio Cruz, Leila Rasonyi and Somogyi Peter, these last two in Budapest, Hungary. During all those years, she also performed in several masterclasses and had lessons with very renowned violinists from throughout the world: Elmar Oliveira, Sebastian Hamann, Andres Cardenes (Cleveland Institute) Jean Marie Conquer (Ensemble InterContemporain), Ruben Aharonian (Borodin Quartet), Boris Belkin, Lorenz Nasturica (Munich Philharmonic), Leon Spirer (Berlin Philharmonic), Amadeus Heutling (Berlin Philharmonic), Gerardo Ribeiro, Jana Lawer and Eric Friedman.

Nowadays Helena Piccazio has full scholarship for the Masters Degree at Lynn Conservatory of Music, in the studio of professor Carol Cole.

UPCOMING EVENTS

Thursday, January 22

WIND ENSEMBLE

Experience an evening when the beauty of woodwinds, the majesty of brass and the power of percussion are brought to the fore. Join us as special guest conductor, Kenneth Amis, combines these exceptional families of instruments in a performance that you dare not miss.

Time: 7:30 p.m.

Location: Louis and Anne Green Center for the Expressive Arts

Tickets: \$10

Saturday & Sunday January 24 and 25

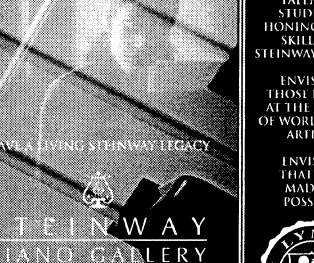
MOSTLY MUSIC: RAVEL

Mostly Music is a unique concert series whose purpose is to better acquaint audiences not only with the music, but also with the lives and artistic development of the Western world's greatest composers. Between musical compositions, actors read excerpts of personal letters written by the featured composers around the same period as the music to be performed. These composers were geniuses but they too lived with all the joys, frailties and frustrations common to humanity. These concerts feature Lynn Conservatory's faculty members, chamber orchestra and students in addition to guest artists. Mostly Music is conceived and hosted by Marshall Turkin and staged by Jan McArt. Regarded as the culmination of musical Impressionism, Ravel's distinctive style, craftsmanship, sophisticated harmonies and orchestrations have established him as one of the giants of the 20th century. This program will feature *Pavane* and *Tambeau de Couperin* for chamber orchestra and his brilliant String Quartet.

Time: Saturday 7:30 p.m. & Sunday 4 p.m.

Location: Amarnick-Goldstein Concert Hall

Tickets: \$25



LEAVE A LIVING STEINWAY LEGACY

STEINWAY
PIANO GALLERY

OFFICIAL MUSICAL PARTNER OF
LYNN UNIVERSITY

FOR INFORMATION CALL 561-982-8887

ENVISION
TALENTED
STUDENTS
HONING THEIR
SKILLS ON
STEINWAY PIANOS.

ENVISION
THOSE PIANOS
AT THE HANDS
OF WORLD-CLASS
ARTISTS.

ENVISION
THAT YOU
MADE IT
POSSIBLE.

