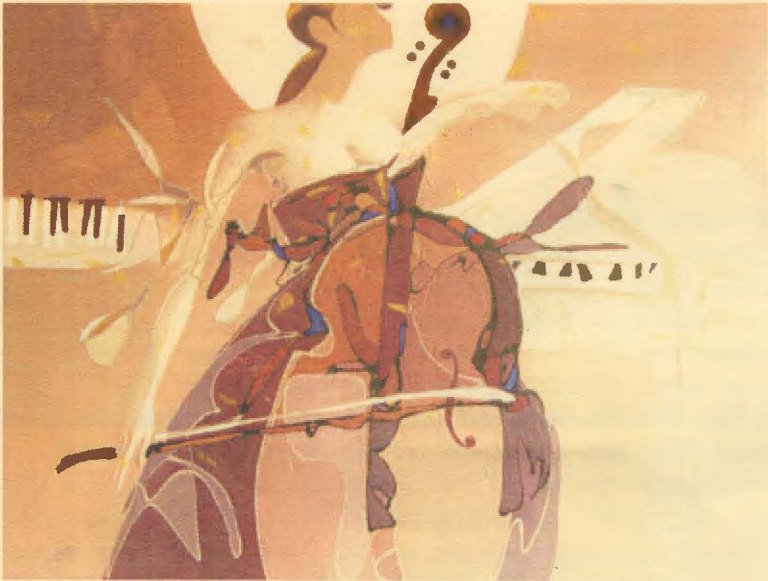




LYNN UNIVERSITY

CONSERVATORY OF MUSIC

2008-2009



Musician with Cello—Vencent Ko

When talent meets inspiration, the results are extraordinary.

Thursday, January 15, 2008

Professional Performance Certificate

Vasile Sult, violin

Tao Lin, piano

Thursday, January 15, 2008

5:30 p.m. Amarnick-Goldstein Concert Hall

Lynn University Conservatory of Music

Boca Raton, FL

Sonata No. 5 for Violin and Basso Continuo
in G minor, op. 5

Arcangelo Corelli
(1653-1713)

I - Adagio

II - Vivace

III - Adagio cantabile

IV - Vivace

V - Giga - Allegro con delicatezza

Jonah Kim, cello

Sonata No. 3 for Violin and Piano
in D minor, op. 108

Johannes Brahms
(1833-1897)

I - Allegro

II - Adagio

III - Un poco presto e con sentimento

IV - Presto agitato

~INTERMISSION~

**First Rhapsody for Violin and Piano
(Folk Dances)**

I - Prima Parte ("Lassu") - Moderato
II - Seconda Parte ("friss") - Allegro Moderato

Bela Bartok
(1881-1945)

Vocalise, op. 34, no.14
Largamente. Molto cantabile

Sergei Rachmaninoff
(1873-1943)

Bess, You is My Woman Now
(from "Porgy and Bess")

Gershwin/ arr. Heifetz
(1898-1937)



Vasile Sult is a native of Romania. He started his violin studies as a 7 year old with Rodica Bucur at "Sigismund Toduta" School of Arts in Deva, Romania. During his education years he has accepted at Academy of Music from Cluj-Napoca, Romania where he graduated. He has been engaged in performing numerous recitals, as a soloist, member of different orchestras and various chamber music groups. He has appeared as soloist with the

"Liutaria" Orchestra in a tour in Romania. Also, he has invited to play with Cluj Napoca National Opera from 2004-2006, Cluj-Napoca Philharmonic, Satu-Mare Philharmonic, Bern (Switzerland) Hochschule Orchestra, Ilmenau (Germany) Capella Juventa. He has been enrolled in fulltime music studies at Lynn University Conservatory of Music with maestro Elmar Oliveira.

UPCOMING EVENTS

Thursday, January 22

WIND ENSEMBLE

Experience an evening when the beauty of woodwinds, the majesty of brass and the power of percussion are brought to the fore. Join us as special guest conductor, Kenneth Amis, combines these exceptional families of instruments in a performance that you dare not miss.

Time: 7:30 p.m.

Location: Louis and Anne Green Center for the Expressive Arts

Tickets: \$10

Saturday & Sunday January 24 and 25

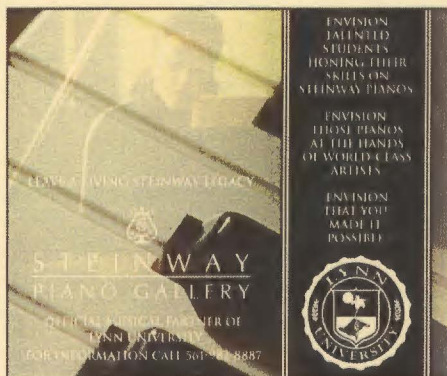
MOSTLY MUSIC: RAVEL

Mostly Music is a unique concert series whose purpose is to better acquaint audiences not only with the music, but also with the lives and artistic development of the Western world's greatest composers. Between musical compositions, actors read excerpts of personal letters written by the featured composers around the same period as the music to be performed. These composers were geniuses but they too lived with all the joys, frailties and frustrations common to humanity. These concerts feature Lynn Conservatory's faculty members, chamber orchestra and students in addition to guest artists. Mostly Music is conceived and hosted by Marshall Turkin and staged by Jan McArt. Regarded as the culmination of musical Impressionism, Ravel's distinctive style, craftsmanship, sophisticated harmonies and orchestrations have established him as one of the giants of the 20th century. This program will feature *Pavane* and *Tambeau de Couperin* for chamber orchestra and his brilliant String Quartet.

Time: Saturday 7:30 p.m. & Sunday 4 p.m.

Location: Amarnick-Goldstein Concert Hall

Tickets: \$25



ENVISION
TALENTED
STUDENTS
HONING THEIR
SKILLS ON
STEINWAY PIANOS

ENVISION
THOSE PIANOS
AT THE HANDS
OF WORLD-CLASS
ARTISTS


ENVISION
THAT YOU
MADE IT
POSSIBLE

PLEASE ENJOY THIS STEINWAY LEGACY

STEINWAY
PIANO GALLERY

OFFICIAL MUSICAL PARTNER OF
LYNN UNIVERSITY

FOR MORE INFORMATION CALL 561-237-9887



CONSERVATORY OF MUSIC AT LYNN UNIVERSITY

3601 N. Military Trail,
Boca Raton, FL 33431
Phone: 561-237-9001

Ticket Office: 561-237-9000
Fax: 561-237-9002

E-mail: tickets@lynn.edu
www.lynn.edu/music