

Lynn University presents

SALUTE TO BROADWAY

Featuring the Lynn Philharmonia Orchestra

Jon Robertson, guest conductor
and special guests,
soprano Mary D'Arcy and baritone Brian Ricci

Saturday, April 24, 2010

7:30 p.m.

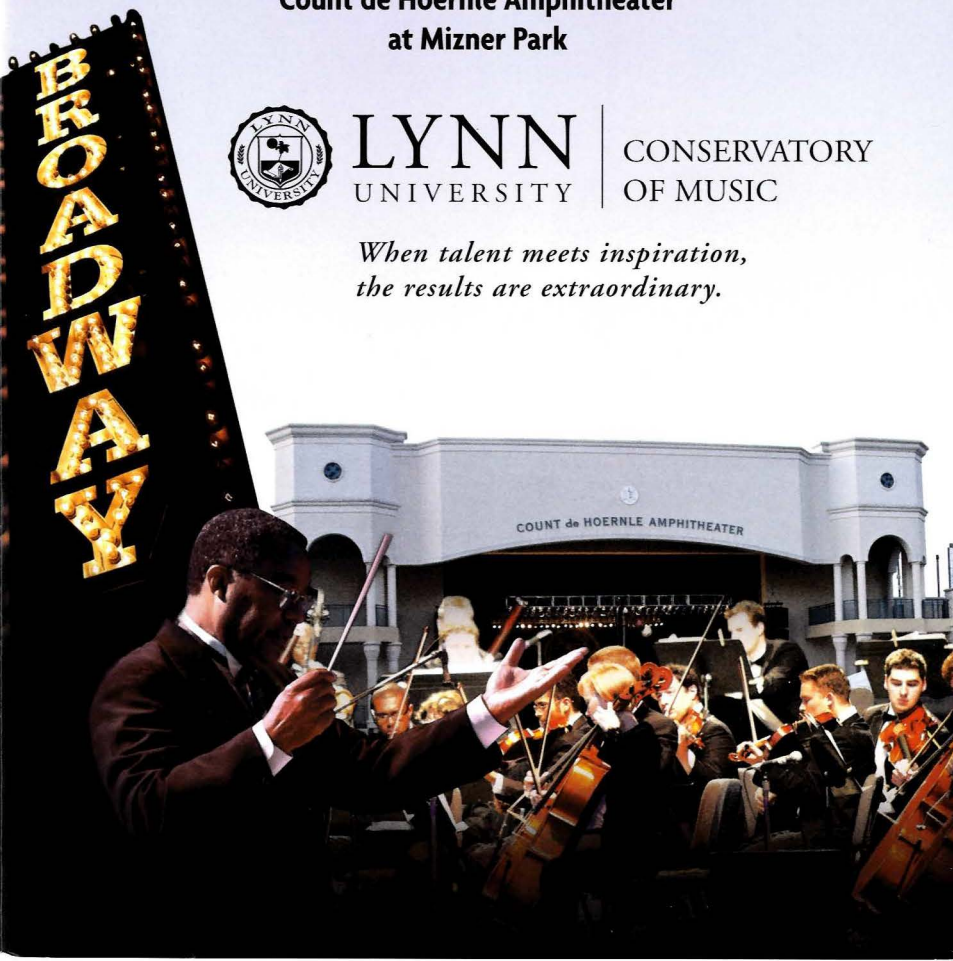
**Count de Hoernle Amphitheater
at Mizner Park**



LYNN
UNIVERSITY

CONSERVATORY
OF MUSIC

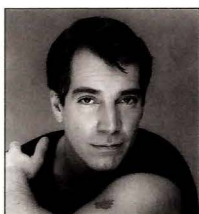
*When talent meets inspiration,
the results are extraordinary.*





Mary D'Arcy, soprano

Mary D'Arcy has starred in Broadway productions of *The Phantom of the Opera*, *Singin' in the Rain*, *Sunday in the Park with George*, and the Playwright's Horizon Workshop of *Into the Woods*, written by Stephen Sondheim and James Lapine. She has toured in productions of *Camelot* and Duke Ellington's *Sophisticated Ladies*, and can be seen opposite James Woods and Drew Barrymore in Steven King's cult classic film, *Cat's Eye*. She premiered the vocal rendition of "Goodbye for Now" (the theme from the movie, *Reds*) and "Take Me to the World" (from *Evening Primrose*). Each holiday season for the past 10 years, D'Arcy has volunteered and performed with the charitable organization, Holiday Express.



Brian Ricci, baritone

Brian Ricci, a native New Yorker, moved to South Florida eight years ago. He studied at The New England Conservatory and at the 29th Street Repertory Theatre School in New York City. He's sung in the chorus of the Boston Lyric Opera Company, and held theatre roles in *Oklahoma*, *Brigadoon* and *Fiddler on the Roof*, among others. In 1996, he made his New York City debut at Carnegie Hall and he has performed roles in numerous oratorios with orchestras including the Florida Philharmonic.



Jon Robertson, guest conductor

Maestro Jon Robertson, dean of the Lynn University Conservatory of Music, enjoys a distinguished career as a pianist, conductor and academician. A graduate of The Juilliard School of Music, he studied piano performance under Beveridge Webster, choral conducting with Abraham Kaplan at Juilliard, and orchestral conducting with Herbert Blomstedt formerly of the Gewandhaus Orchestra (Germany). He continues to guest conduct and perform in concert as a member of the Cole-Robertson Trio.



Lynn Philharmonia Orchestra

The Lynn University Philharmonia Orchestra sets the standard for conservatory-level symphonic training. Now in its 18th season as a full symphony, the Philharmonia is an integral part of the education of the conservatory's graduate and undergraduate music students. It presents an annual series of high-quality concerts with a wide range of repertoire. Albert-George Schram serves as the Philharmonia's music director and conductor.



Musical Program

Philharmonia Orchestra

My Fair Lady: Symphonic Portrait

Frederick Loewe and Alan Jay Lerner
arr. by Bennett

Mary D'Arcy, soprano

Singin' in the Rain: Medley

Nacio Herb Brown and Arthur Freed
arr. by Jurman and orch. by Zito

"Tonight" from *West Side Story*

Leonard Bernstein

Phantom of the Opera: Christine Medley

Andrew Lloyd Webber
orch. by Troob

Philharmonia Orchestra

On the Town: Three Dance Episodes

The Great Lover

Times Square 1944

Leonard Bernstein

Brian Ricci, baritone

"Maria" from *West Side Story*

Leonard Bernstein

"Bring Him Home" from *Les Misérables*

Claude-Michel Schönberg
Alain Boublil and Herbert Kretzmer
arr. by Krogstad

"How to Handle a Woman" from *Camelot*

Frederick Loewe and Alan Jay Lerner

Mary D'Arcy, soprano

Brian Ricci, baritone

"If I Loved You" from *Carousel*

Richard Rodgers and Oscar Hammerstein II

"People Will Say We Are in Love"
from *Oklahoma*

Richard Rodgers and Oscar Hammerstein II
orch. by Bennett

Philharmonia Orchestra

The Sound of Music: Selections for Orchestra

Richard Rodgers & Oscar Hammerstein II
arr. by Bennett

Brian Ricci, baritone

"You Raise Me Up"

Brendan Graham and Rolf Løvland
arr. by Krogstad

Mary D'Arcy, soprano

Brian Ricci, baritone

"The Prayer"

Foster/Sager/Testa/Renis

Benefit Concerts at Lynn University April 30, May 1

DASHBOARD CONFESSIONAL

ALTER THE ENDING

AND FRIENDS



The Journey of Hope continues ... with 3 concerts to benefit the Lynn University Memorial Scholarship Fund

SATURDAY, MAY 1, 7 P.M.

Stake out your spot on
the lawn and rock out
under the stars to
Dashboard Confessional

\$20

Lynn University
campus intramural field

Tickets: \$20/person
Lynn students free with
current ID

FRIDAY, APRIL 30, 8 P.M.

Dashboard Confessional
with the Lynn University
Philharmonia Orchestra

\$75

Keith C. and Elaine Johnson Wold
Performing Arts Center on the
Lynn campus

Tickets: \$75/person

FRIDAY, APRIL 30, 6-7:30 P.M.

Exclusive VIP unplugged performance with Chris Carrabba

\$300

Keith C. and Elaine Johnson Wold Performing Arts Center's
intimate Schmidt Studio

Tickets: \$300/person (includes drinks, hors d'oeuvres and free ticket to 8 p.m. concert)

www.lynn.edu/benefitconcert
Box office: 561-237-9000

Dashboardconfessional.com

Proceeds from all three concerts benefit the Lynn University Memorial Scholarship Fund in honor of the Lynn University faculty members and students who died in an earthquake while providing service and care to the people of Haiti during the Journey of Hope course in January 2010.



LYNN
UNIVERSITY

3601 N. Military Trail, Boca Raton FL 33431